



DP2 VESSEL RS SENTINEL

This unique vessel has especially been reconstructed and equipped for multi purposes such as surveys, light constructions, ROV inspections and work, diving operations and maintenance services.

In 2009 the vessel was extensively upgraded and fitted, to include new accommodation, new main engines, new Kongsberg DP2 System and new aft deck.

The diesel electric propulsion system is designed for low fuel consumption which leads to lower emissions and less environmental impact.

The Vessel is equipped with a complete and certified Air Diving Spread for diving work in DP Mode and a working class ROV with TMS System.



[1]



[2]

THE VESSEL

- [1] Ships view
- [2] Crane deck

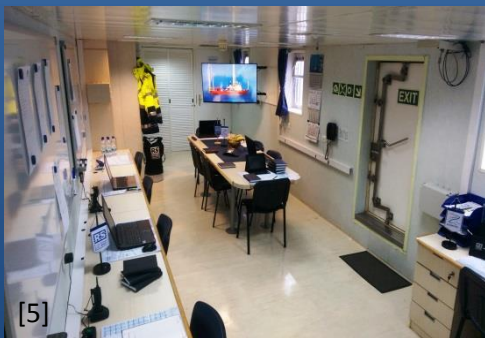


[3]



[4]

- [3] Taut Wire System
- [4] Palfinger Crane



[5]



[6]

OFFICES

- [5] Office 1
 - Conference Table
 - Phone
 - LED Screen
 - 5 Work Desks
- [6] Office 2
 - Small Conference Table
 - Conference Phone
 - Work Desk & Printer



[7]



[8]

CATERING

- [7] Serving Area
- [8] Mess Room



[9]



[10]

CABINS

- [9] Single Room
- [10] Double Room
- Cabins with Shower & WC



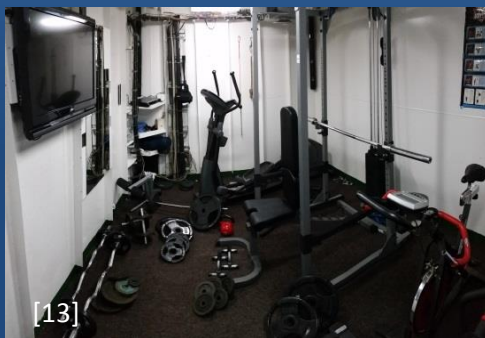
[11]



[12]

- [11] Hospital
- ECG & Defibrillator

- [12] Hoist Platform



[13]



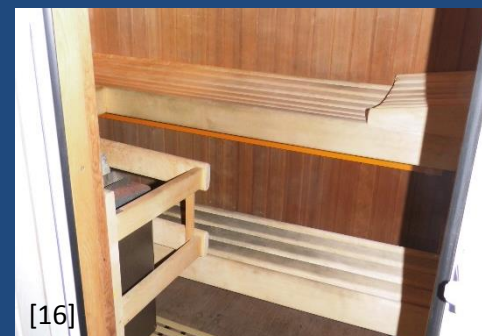
[14]

LEISURE

- [13] Gym
- [14] Lounge
- 75" & 60" LED TV Screens



[15]



[16]

- [15] Whirlpool

- [16] Sauna



The DP II Vessel RS SENTINEL stands out due to the following equipment:

- Seaeye Panther XT Plus (Appendix 1, Technical Specification)
- Seaeye Falcon (Appendix 2, Technical Specification)
- Dive Control Container (Appendix 3, Technical Specification)
- Deck Decompression Chamber (Appendix 4, Technical Specification)
- LARS (Launch and Recovery System) (Appendix 5, Technical Specification)
- Nitrox Container (Appendix 6, Technical Specification)
- Palfinger Crane (Appendix 7, Technical Specification)
- Light Weight Taut Wire System (Appendix 8, Technical Specification)
- QINSy (Quality Integrated Navigation System) (Appendix 9, Technical Specification)
- Zodiac (Rigid Inflatable Boat) (Appendix 10, Technical Specification)
- ESVAGT Safe Personnel Transfer Basket (Appendix 11, Technical Specification)
- Survey Pole (Appendix 12, Technical Specification)

Upon request, the DP II Vessel RS SENTINEL can be additionally equipped with an A-Frame.

Specifications subject to change at owner's discretion

Seaeye Panther-XT Plus

1000m Depth Rated

The customizable Seaeye Panther-XT Plus is designed as the benchmark for electric work ROVs and challenges heavier and more costly hydraulic vehicles, particularly where deck space is at a premium.

Thanks to its 500V eight horizontal thrusters and dual power supplies, the Seaeye Panther-XT Plus benefits from exceptional handling and boasts a high power to weight ratio while maintaining an observation class deck footprint.

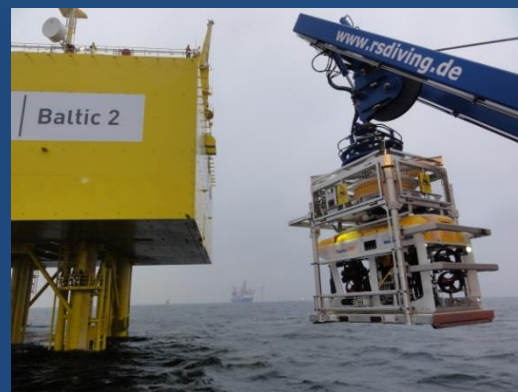
The RS DIVING Panther-XT Plus ROV brings with it the state of the art fully articulating proportional Schilling Orion 7-Functions manipulator for delicate intervention operations, as well as the muscle and brute force of the Schilling Orion 4-Function Manipulator for when you need power that makes a difference subsea.

The RS Diving Panther-XT Plus accommodates a wide range of sensors and interchangeable tooling packages to answer the demands of challenging tasks and ever changing conditions, without the high costs associated with larger and more expensive systems.

When the ROV system is large, then everything else must be as well, launch & recovery system, deck space, vessel, and the day rates involved in all of the associated pieces required for such larger ROV systems. But with the RS Diving Panther-XT Plus, it's large on capability and versatility while being the right size for your needs, desires and budget. Smaller deck footprint, means smaller vessel, and the savings only get better from there.

The RS Diving Panther-XT Plus is highly suited for work tasks including drill support, pipeline survey, salvage, cleaning, dredging and light IRM to depths of 700 meters.

With its stainless steel TMS, the RS Diving Panther-XT Plus has over 150 meters of tether and 700 meters of umbilical to take it to the depths where your assets and valuable investments await. You know you're in good hands with RS Diving.



ROV CONTROL CABIN / WORKSHOP CONTAINER

Dimensions	20ft Split A60 Safe Area Container 20ft x 8ft wide x 9ft high, 4mm
Isolation	Walls, floor and ceilings insulated and lined to SOLAS A60 fire rating
Electrics	Electrical power distribution system for cabin, ROV system and LARS
Interior	Semi Highback Pilot Seat 2 x 42" & 7 x 17" LCD Monitors

LAUNCH AND RECOVERY SYSTEM (LARS)

LARS	<ul style="list-style-type: none"> - Hydraulic winch unit (700m capacity) 2.2 Tonne load rating - Hydraulic Power Unit & controls Lloyds witnessed load testing - Snubber rotator unit for safe transfer the TMS smoothly through the LARS - Certified to EN12079 for offshore lifting Technical manual & certification - High folding platform in front of the LARS for additional work space
------	---

TETHER MANAGEMENT SYSTEM (TMS)

Description	For work at greater depths, in higher currents and for faster travel to and from the working zone, as well as greater protection of the vehicle through the splash zone, the Panther-XT Plus comes with a TMS.
Construction	<ul style="list-style-type: none"> - Stainless Steel TMS Frame - Bailing arm style TMS with 200m of 20.6mm tether.

TRANSPORT DIMENSION

Container	1x 20"-Container á 10.500kg (L 6,06m x B 2,45m x H 2,75m)
ROV LARS	17.200kg (6,06m x 2,45m x 3,58m)

Main Details

ROV :	Remotely Operated Vehicle
Serial No.	(977)
Product	Seaeeye Panther-XT Plus 1000 m rated
Producer	Saab Seaeeye Ltd.

Technical Details

Depth rating	1000 msw
Length	2140 mm
Height	1217 mm
Width	1060 mm
Launch weight	800 kg
Thrust forward	353 kgf
Thrust lateral	248 kgf
Thrust vertical	105 kgf (std)
Depth rating	1000 msw
Length	2140 mm

ROV SENSORS

Sonars	<ul style="list-style-type: none"> - Tritech Super SeaKing scanning sonar - Blueview M900-130 2D imaging sonar - Tritech Altimeter PA 200
--------	--

ROV TOOLS

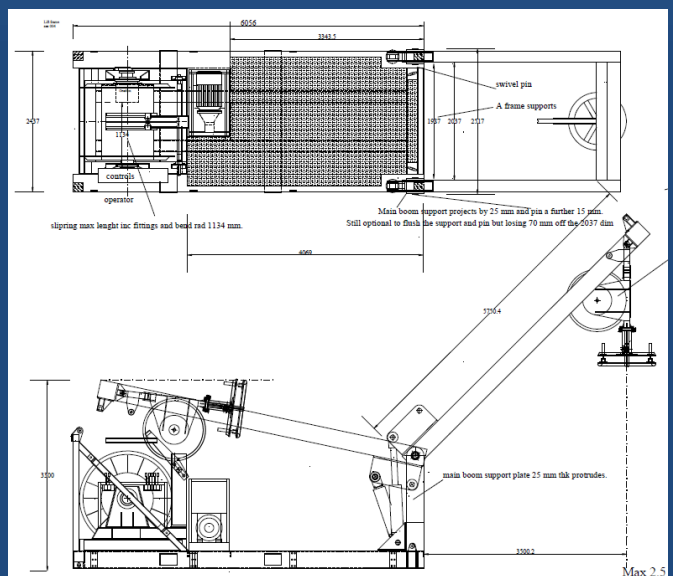
Manipulators	<ul style="list-style-type: none"> - Schilling Orion 7P Work Class Arm (proportional control) with 7.8" PA Gripper - Schilling Orion 4R Work Class Arm (rate control) with 7.8" Gripper
Camera	<ul style="list-style-type: none"> - 4 x Colour Camera (Manipulator Camera) - 1 x Low Light Camera - Recorder with geo referenced overlay
Further tools	<ul style="list-style-type: none"> - Rotary Disc Cutter - Cleaning Brush - Cygnus UT Gauge (Mk5 2000m) - CP Probe



TMS



ROV CONTROL CABIN



A-FRAME LARS

Specifications subject to change at owner's discretion

SPECIFICATION

ROV SEAEYE FALCON

Falcon ROV 300m depth rated

The Falcon ROV system is configured to be a free swimming ROV platform. It is adaptable, reliable and can perform varied subsea tasks from GVI's, CVI's and Diver Support to CP surveys and light cleaning duties.

Various tooling packages can be integrated with the Falcon (listed below). The Seaeeye Falcon is the choice of many leading operators for capability, versatility and the ability to get the job done. Lightweight and portable, they go where they're needed - inshore, offshore, down tunnels or for remote location operations where portability and durability mean success.

Available with a choice of options, tools and accessories, such as Rotary Cleaning Brushes, CP Probes, Pipe & Cable Trackers and Ultra Sonic Thickness Gauge to Extended Tether Hand Winches and Manipulator Skids, Seaeeye Falcons make an ideal platform for achieving numerous intricate and demanding subsea applications.



Main Details	
ROV :	Remote Operated Vehicle
Serial No.	12238
Product	ROV SEAEYE FALCON – 300m rated
Producer	Saab Seaeeye Ltd 20 Brunel Way, Segensworth East, Fareham, Hampshire, PO15 5SD, United Kingdom Tel: +44 (0) 1489 898000 Fax: +44 (0) 1489 898001 E-Mail: rovs@seaeeye.com
Supervising authorities	D_TÜV, Germanischer Lloyd
Technical Details	
Length	1000 mm
Length of ante chamber	1000 mm
Height	545 mm
Width	600 mm l
Thrust Fwd	48 kg
Thrust Lateral	28 kg
Thrust Vertical	12 kg
Weight	65kg
	Payload 10 - 15 kg
Video Overlay includes as standard	
	Compass Heading
	Depth in Meters or Feet
	Camera tilt Platform Position
	Auto Function Status
	Date and Time
	Turn Counter
	Free Designable User Screens
	Facility to Export Data to Survey
	CP reading (optional)
	Odometer Count (optional)
Power requirements	
	220-240Vac single phase 16amp

Standard Falcon supplied with	
5 x	MCT1 Thrusters
1 x	Color Camera
1 x	Monochrome Camera
1 x	Super Sea King Sonar
1 x 300m	Low Drag Tether
1 x 200m	
1 x 100m	
1 x	Full LED Light, incl. 3 rd LED Lamp
1 x	Grip Stick incl. Rope Cutter
Standard surface equipment	
1 x	Power supply unit including Pilot Monitor and Hand Control Unit
1 x	Desktop System for Video backup, video editing, Survey and additional tasks including
2 x	LCD Monitors
1 x	Touchscreen
1 x	Trackball
1 x	USB Video Grabbers
1 x	Wireless Router
1 x	Various Software
1 x	Digital Video Recorder
1 x	Fully network capable (e.g. wireless streaming of ROV Pictures in real-time, complete network access)
1 x	Laptop as complete backup system
1 x	Remote spares package and toolset
Special features for RS Diving	
1 x	300m 11mm cable / 20m decks lead
1 x	Extended Tether Hand Winch
1 x	Lock Latch System
1 x	Rear Camera
1 x	Five Function Manipulator Skid
1 x	ROV Cage for Subsea Deployment
1 x	CP Probe



LED Lights



Five Function Manipulator Skid

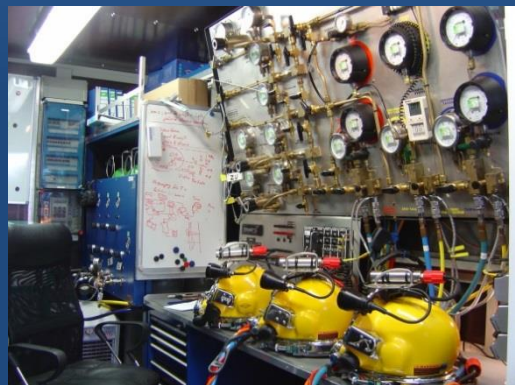


Surface Control

Specifications subject to change at owner's discretion

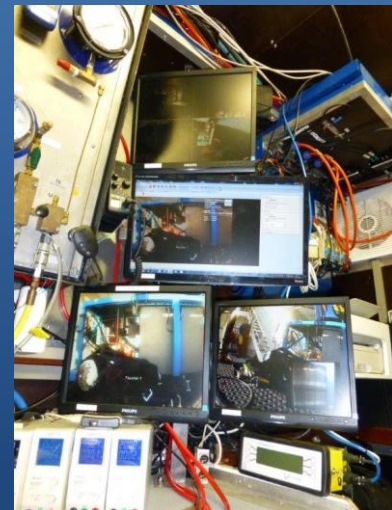
Dive Control Container I

- Size L19'10 1/2' x W8' x H8'6
- Certified by Germanischer Lloyd
- Insulation of walls
- Ventilation system for in- and outlet of the container
- Certified Tools



Main Details	
DDC I	Dive Control Container I
Serial No.	D-HH-4529/GL6271
Product	20" CSC
Producer	Hytech bv. and RS DIVING GMBH
Certification	DNV GL
Dive equipment certified by GL, Germanischer Lloyd	
3 x Diver Umbilical	<ul style="list-style-type: none"> • 140m long fibron umbilical • Pneumo hose • 3 wire Light cable • 3/8 air supply hose • video cable • 4 wire coms cable
3 x diver helmet	27 b Kirby Morgan
1 x diver helmet	17 b Kirby Morgan double outlet valve
3 x jackets	diver jackets MK 5 and MK 3
3 x bail out	10L steel bail out bottles
Diver gas panel	3 diver gas panel O2 analyser
Distribution panel	3 inlet and outlet distribution panel with filling station
6 x 50 L Air Cylinder	6 x 50L bottles, 200 bar air cylinder connected to the distribution panel
HP Compressor	240l/min Bauer HP Verticus Compressor super silence
diver lights	24V diver helmet lights
Underwater Camera System	<ul style="list-style-type: none"> • 3 diver underwater camera system • voice recording - black box DVD continuously recording diver 1,2 and 3 • client DVD recording with video - overlay -system
2 x decks camera	decks camera system one black and white camera and one colour decks recording on DVD and VHS tape
Communication System	<ul style="list-style-type: none"> - 2 x three diver Amcom coms. Box complete round robin system for - two extra tender (crane driver) . - loudspeaker

UW Burning and welding Equipment	
1 x welding unit	welding unit Esab 630 LHF
1 x cable	100m burnig cable with O2 hose, 100m welding cable
	broco torges with spare parts
	welding torges
	surface welding equipment
	O2 reducer for subsea burning
	Different size roads
Contents Workshop Equipment	
Equipment	different sizes of workbenches
	spare parts of dive equipment
	Tools (driller, grinder, ...)
	Measuring tolls
	Dräger smoke dive equipment
Medical	eye wash station
	first aid box to offshore standard

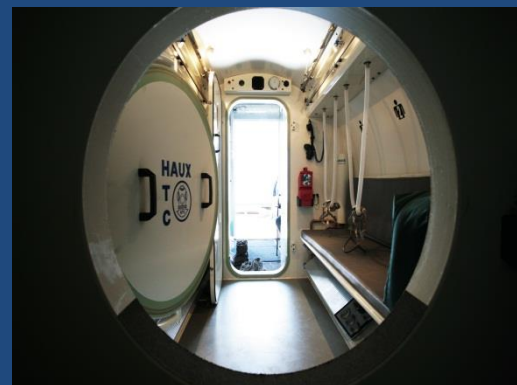


Specifications subject to change at owner's discretion

DECK DECOMPRESSION CHAMBER I

The RS Diving DCC I is a fully equipped, state of the art hyperbaric chamber system for up to 6 Persons. It can work to up to 5,0 bar overpressure and contains all necessary medical and life saving appliances needed for a mobile treatment system in accordance to IMCA Standards.

Main features are a rectangular door for easy and direct access to the main chamber, oxygen breathing system for main and entry chamber, internal air bank for backup and a complete monitoring system as well as all necessary supervision and safety devices.



Main Details	
Chamber :	Containerized Diver Decompression Chamber (DDC)
Serial No.	200516
Product	Starcom 2000/5,5
Producer	Haux Life Support GmbH
Certification	D_TÜV, DNV GL
Technical Details	
Max.working pressure	5,0 bar gauge = 6,0 bar absolute = 6 ATA
Design pressure	5,5 bar gauge = 6,5 bar absolute
Test pressure	8,25 bar gauge = 9,25 bar absolute
Main chamber capacity	sitting persons or 2 lying persons on stretchers or mixed other arrangements
Ante chamber capacity	2 sitting persons
Inner Diameter of chamber	2000 mm
Length of main chamber	2200 mm
Length of ante chamber	1000 mm
Main chamber volume	6.700 l
Ante chamber volume	3.100 l
Length overall (incl. control stat.)	4385 mm
Width over all	2020 mm
Height overall (incl. lamps)	2050 mm
Circular door (AC-direct, AC/MC)	Ø 700 mm
Rectangular door (MC-direct)	1500x600 mm
Supply Lock MC	Ø 200 mm / 300 mm free length
NATO-/STANAG/Din-Bayonet	for connection of transportable chambers (arranged at AC-access)
Material	P265 GH
Weight of chamber	9.500 kg (appr.), fully equipped

Safety Equipment	
Firefighting	<ul style="list-style-type: none"> - Haux Spray Fog" high pressure fog fire extinguish system in both chambers with additional manual trigger - Hyperbaric fire extinguishers in both chambers as well as in the control area. - Special hardly inflammable upholstery of the interior - Additional fire blankets in the chambers - Draeger Smokedive equipment for the operator with build in connections on the control panel
Medical	<ul style="list-style-type: none"> - complete medical treatment backpack - Wenoll system – emergency oxygen case for artificial oxygen supply - AED (automated external defibrillator) - Spine Board with fixation straps and neck support - 1-aid boxes, eye wash station



Communication Monitoring

Communication	<ul style="list-style-type: none"> - Chamber intercom system "Haux Star Com" for both chambers - Permanent-dynamic telephone with howler - TV Monitoring system for both chambers - Black Box recording of chambers cameras and communication - Independent monitoring of the oxygen concentration of both chambers with adjustable min and max alarms - digital monitoring system "Jumo Logo screen" for continuous registration of time-pressure profile as well as oxygen - concentration of both chambers including backup function on MMC-Card for archivation - all electronic systems including illumination are buffered by a UPS Unit which ensures operation without external power for minimum 30 min
---------------	--

General Futures

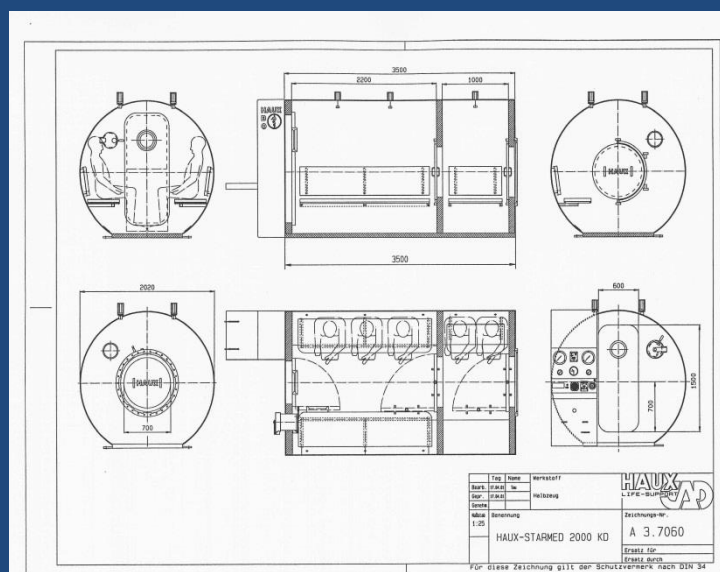
General Futures	<ul style="list-style-type: none"> - All valves are fitted from the in- and outside to ensure safe operation under all circumstances - oxygen system switchable - Semi-automatic ventilation valve ("Haux Ventmaster") to ensure fresh air according to the number of persons in the chamber - internal air bank with 6x50l air tanks as emergency backup - SPS controlled alarm system for phase fault, low level fire control room with one frontal and one sideway door to ensure freedom of positioning
-----------------	--

Connections

Breathing gases	<ul style="list-style-type: none"> - 2 low pressure air inlets - 1 high pressure air inlet - 2 low pressure oxygen inlets - Outlet manifold for external discharge of breathing gases
Electrical	32 A power connection
Container	- Equipped with standard 20 container ZT wist Locks

Documentation

Documentation	<ul style="list-style-type: none"> - Operation manuals - Emergency procedures - Maintenance manuals - Spare part lists - Integrated in the RS Diving Contractor planned maintenance system (PMS) including test certificates and maintenance schedules
---------------	--



Specifications subject to change at owner's discretion

SPECIFICATION

Launch And Recovery System

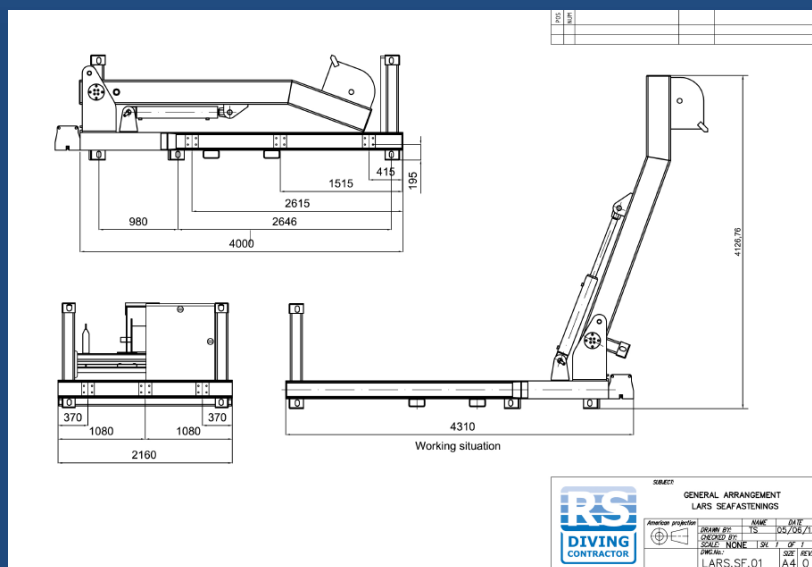
LARS with Top Winch

This Launch and Recovery System is specifically designed to provide an extreme compact option to the standard launch and recovery systems offered by our competitors. This system is very easily transportable; it's designed to fit 2 complete systems in a high cube 20" container. We realize the necessity to use the least amount of deck space onboard a vessel and ensure that shipping & mobilization costs are kept to a minimum. The configuration offered in this specification is viewed as being the most practical solution for a mobile launch & recovery system that complies with IMCA's diving standards and your specification requirements.



Main Details	
L.A.R.S:	Diver Launch and Recovery System
Serial No.	
Product	
Producer	Pommec BV
Certification	Class approved
Technical Details	
Dimensions stored	4000 x 2200 x 1300 mm (LxWxH)
Dimensions operational	5300 x 2200 x 4270 mm (LxWxH)
Weight	3250 kg (including clump weight and cage)
Power hydraulic supply	180 bar, 42 l/min
Power electric supply	Each motor of the power pack has a 400V-50Hz 32 Amp connection. Each motor needs to have a power supply of 25-30 KwH. For the LARS system itself the connection is 230V-50Hz 16 Amp
Work area	
Offshore	Open sea environment (Lloyd's Register)
Fixation	4 mounting plates
Work temperature	- 10°C...+ 50°C
Control	
Control	Control box mounted on platform
Winches	
Material:	stainless steel – AISI 316 L
Brake:	- Double break man-riding winches
Wires:	Diam. 10mm wire for cage, 75 mtr Diam. 8mm wire for clumpweight, 150mtr

Material & Preservation	
Platform	offshore coated steel – Fe 510 D
A-frame	offshore coated steel – FE 510 D
Control box:	stainless steel – AISI 316L
Electronic control box	stainless steel – AISI 316 L (IP66)
Cylinders	offshore coated steel – Fe 510D, hard chrome rods
Diving cage	
Material	Stainless Steel AISI 316L
Inner dimensions	1250 x 900 x 2300 (LxWxH)
Weight:	250 kg
Payload:	500 kg
Clump weight	
Material	stainless steel – AISI 316L, ballast lead weights, 2 brass sheaves synthetic top plate
Dimensions:	1500 x 300 x 255 mm (L x W x H)
Weight:	200 kg



Specifications subject to change at owner's discretion

Nitrox Container

Mixed gas container with autonomous Nitrox gas production and emergency breathing gas storage.

The container is divided into two compartments in order to isolate noise-producing equipment, and to provide a noise protected control room.

Room 1: Control room for storing and regulating the breathing gas for each respective dive.

Room 2: Nitrox breathing gas production, high- and low-pressure compressors, and climate control.



Container Size	
Length	20 feet (610 cm)
Width	8 feet (244 cm)
Height	8 feet, 6 inches (259 cm)
Non-combustable insulation	50mm
Low-Pressure Compressor	
Make/Model	Renner RSDK-15
Operating Pressure	15 bar
Delivery Rate	1240 liters per min.
Electrical Requirements	400V /50Hz
Storage Tank	500 liter
High-Pressure Compressor	
Make/Model	Bauer V 12.14-7,5-5
Operating Pressure	225 bar
Delivery Rate	260 liters per min.
Electrical Requirements	400V /50Hz
Power Consumption	5.3 kw
Dimensions	148 x 83 x 152 cm
Weight	Approx. 305 kg

Breathing Air Bottle	
Volume	50 liter
Pressure Rating	200 bar
Number	14



Specifications subject to change at owner's discretion

Palfinger Crane PK 14002-EH

is a remotely operated hydraulic crane. It is installed next to the dive deck and is used for crane operations during diving. It can also extend the range of the divers by using a "Golden Gate" on the crane, where the divers attach their umbilicals.

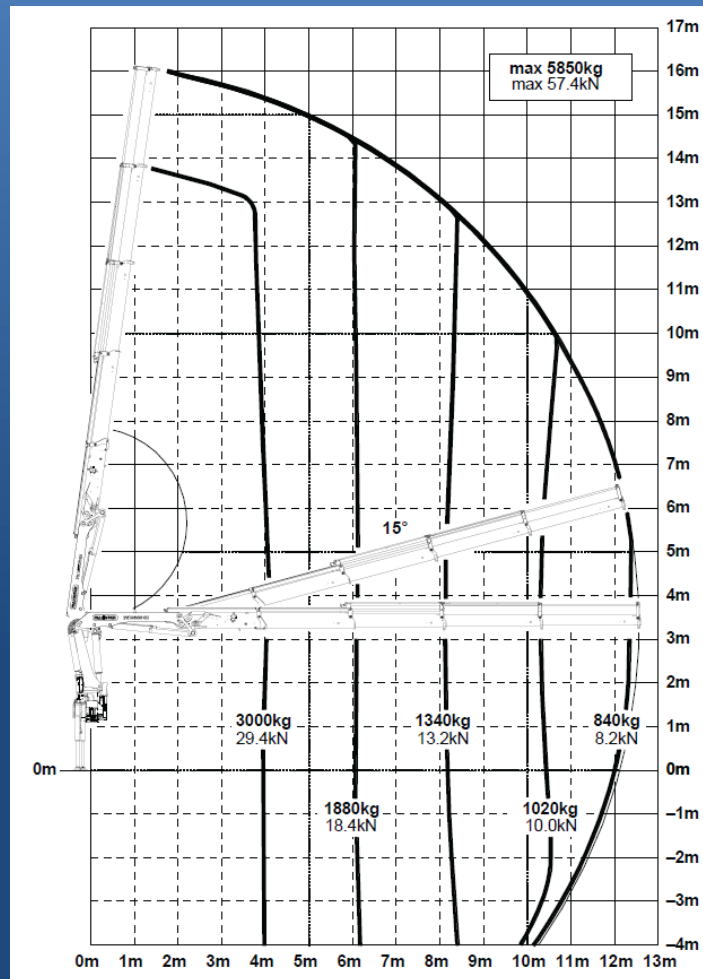


Main Details

Palfinger PK14002-EH	Hydraulic Crane
Serial No.	1001833243
Product	Palfinger Crane with winch. Powered by Rexroth Hydraulic Power Pack
Producer	Palfinger
License	

Features

- Operation via remote control or levels on the crane
- Integrated Load and Geometry Monitoring System to avoid that the maximum load is exceeded
- Max. Reach of the crane: 17m (app. 15m overboard) by 450kg
- Max. load on the winch: 1900kg
- Max. load on the crane: 5650kg
- 72m cable on the winch to reach a water depth of approx. 45m during full reach of the crane



Specifications subject to change at owner's discretion

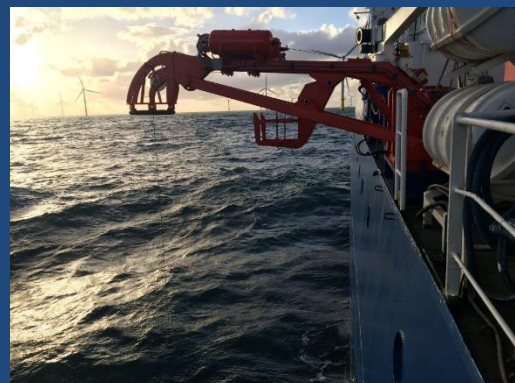
SPECIFICATION

Taut Wire System

Light Weight Taut Wire Mk 15B Position Reference System

The Light Weight Taut Wire Mk 15B is a position reference system designed for use in deck-mounted port or starboard position on surface vessels. Its purpose is to provide accurate data of a surface vessel's movements with respect to the position of a depressor weight on the sea floor.

A wire is maintained at a constant tension by means of a depressor weight on the sea-bed and a pneumatic and electric servo-assisted "mooring" system. Any movement of the vessel will cause the tensioned wire to deviate from its initial inclination. This movement activates potentiometers mounted in the gimbal (sensor) head and produces changes of analogue signals directly proportional to the deviation in inclination.



Manufacturer's Info	
Model	LTW Mk 15B
Article Number	702788
Manufacturer	KONGSBERG MARITIME AS Norway

Dimensions, Deck Equipment	
Height (parked)	3550 mm
Height (operational)	1665 mm
Width	1400 mm
Length (parked)	1700 mm
Length (operational)	5115 mm
Weight	2530 kg incl. depressor (360 kg)
Support Frame	1700 mm x 1300 mm

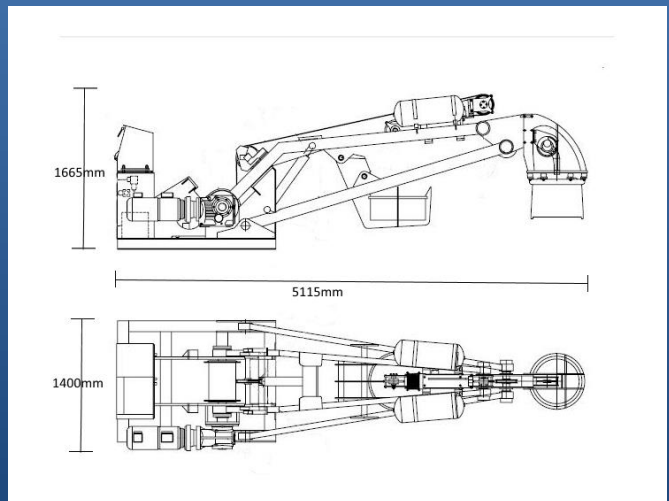
Dimensions, Electronics Cabinet	
Height	1900 mm
Width	800 mm
Depth	510 mm
Weight	250 kg

Note: Distance between deck equipment and electrical cabinet must not exceed 50m.

Electrical	
Input Voltages:	440 VAC +20%/-30% 3-phase, 50 to 60 Hz 220 VAC, single phase 50 to 60 Hz, (from UPS)
Power Consumption:	
- 440 VAC Input	22 kW (continuous load) 36 kW (peak load, max 30 min)
- 220 VAC input	500 W

Pressurized Air	
Maximum Pressure	10 bar
Minimum Pressure	6 bar
Minimum Flow	5 Nm ³ /h
Purity (in accordance with ISO 8573-1):	
- Solid Contamination	Class 5
- Water	Class 3
- Oil	Class 5

Environmental	
Ambient Temperature (Operational)	
- Cabinet	0 to +55°C
- Deck Equipment	-15 to +65°C (no ice)
Ambient Temperature (Storage)	
	25 to +70°C
Ambient Relative Humidity (Operational)	
	20% to 100%
Ambient Relative Humidity (Storage)	
	0% to 100% (sealed in aluminum foil)
Operating Wind Strength	
	0 to 80 knots
Ice Thickness	
- Operational	NONE
- Parked	Up to 100mm
Acoustic Protection	
- Cabinet	IP22
- Deck Equipment	IP56

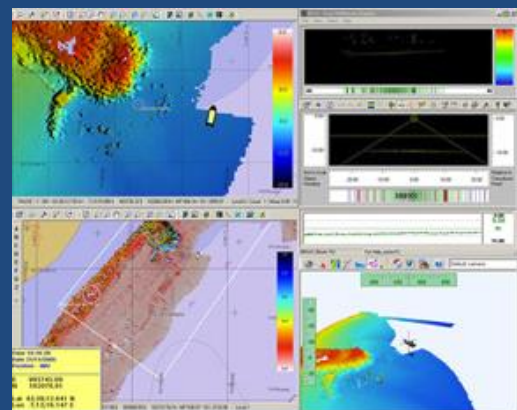
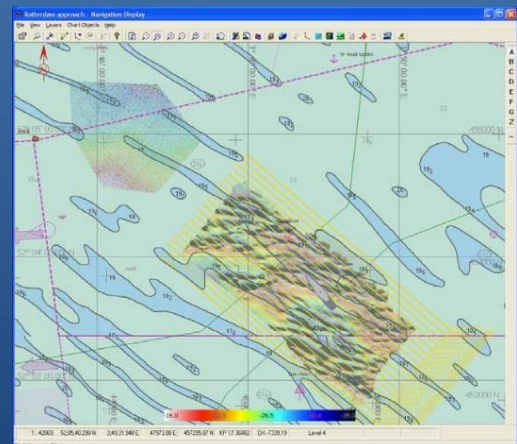
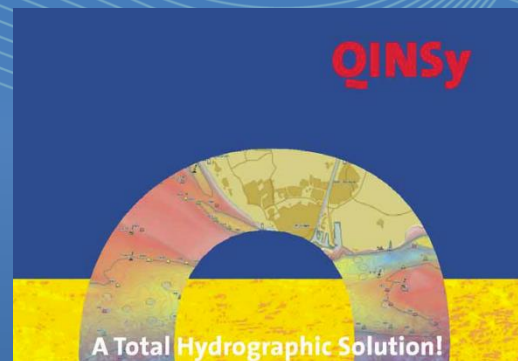


Specifications subject to change at owner's discretion

QINSy

(Quality Integrated Navigation System)

is a hydrographic data acquisition, navigation and processing software package. The suite of applications can be used for various types of surveys, ranging from simple single beam surveys up to complex offshore construction works.

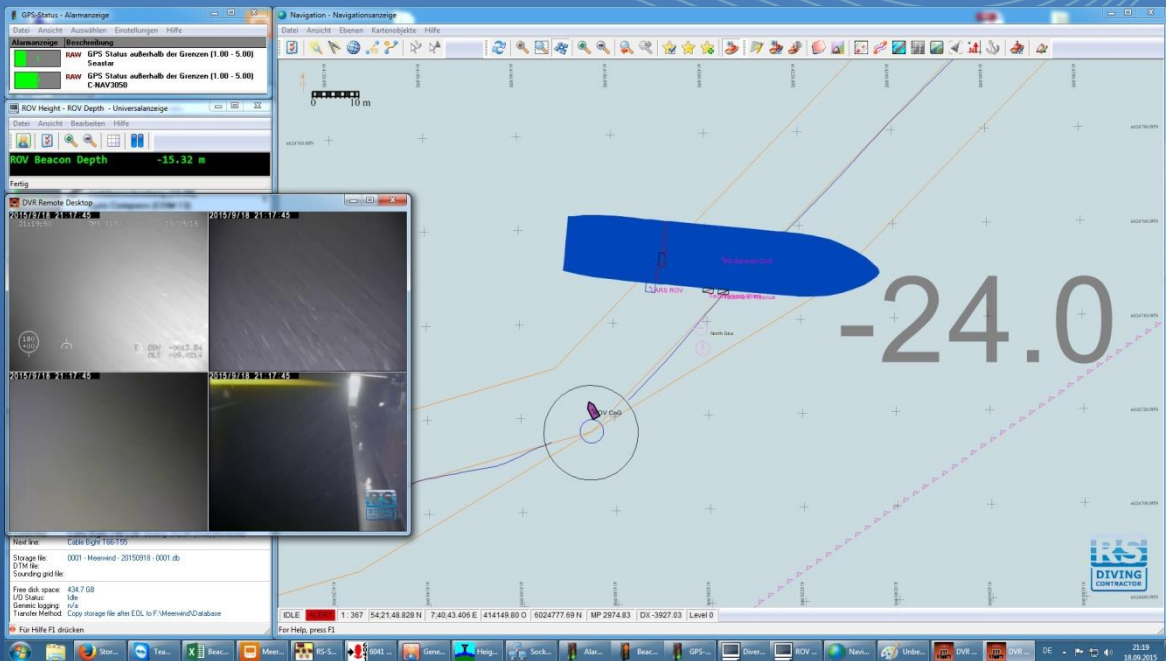


Main Details

QINSy:	Quality Integrated Navigation System
Serial No.	CZC5173CT2 (Desktop)
Product	Software (incl. PC and LED Screens)
Producer	QPS (Member of Saab Group)
License	Survey

Features

- Hydrographic & Oceanographic Survey
- Offshore Inspection Survey
- Marine / Offshore Construction Support
- ROV & Diver Tracking and position data collection



ROV inspection tracked by QINSy, showing the ROV's depth and position to navigate the ROV as close and as fast to the job task as possible.



USBL beacons are mounted on diving equipment, the ROV and crane hook.

QINSy is tracking divers' depths and positions to assist in diving procedures and during under water crane operations.



Each department on board the RS Sentinel is equipped with a client computer running QINSy to assist with their job tasks. Those clients are controlled by the host QINSy computer located in the survey office, to support ROV & Dive Control and the DP Bridge (as shown in the photograph).

Zodiac

Rigid Inflatable Boat

Lightweight but high-performance and high-capacity boat constructed with a solid, shaped hull and flexible tubes at the gunwale.

Designed for offshore voyages in conditions up to and including wind force 8 and significant wave height up to and including 4 meters.



Main Details	
Vessel:	Zodiac
Number plate	EMD-RS 3
Construction Number	NL-EoW10001E212
Product	BUE SPRINT 100 OP
Producer	Euro Offshore Service BV
Material	GFK
Length	5,70 mts
Beam	2,30 mts
Draught	0,10-0,80 m
Weight (tanks empty)	0,285 tonnes
Water displacement	< 10 m ³
Year of construction	2012
Engine	
Engine product	Yamaha F70 Four-Stroke
Engine number	6C J00YM-1
Displacement	996 cc
Horse Power	70hp at 5800 RPM

Capacity	
Max. number of persons	8
Max. load	850 kg
Max. power	168hp (125 kW)
Fuel Tank	2 x 25 ltr
Equipment	
Life buoy 2,5 kg	1 x
Floating rescue line	1 x
Commet red handflare	2 x
Commet smoke signal	1 x
Comet red parachute signal rocket	3 x
Trailer	
Trailer type	V 1500-20-6014 R (x=145cm)
Trailer ID	XNYG1150012000151
Nummerschild	52-WJ-HN



Specifications subject to change at owner's discretion

SPECIFICATION

ESVAGT Safe Personnel Transfer Basket



ESVAGT Safe Personnel Transfer Basket

The Safe Personnel Transfer Basket from Esvagt enables safe, quick and effective transfer between offshore installations, drilling rigs and vessels.

The Basket is constructed to considerably enhance safety and confidence levels for personnel during transfers.



Dimentions	
Diameter	2600 mm
Height	3222 mm
Weight	450 kg
Weight of Transfer Cable	30 kg
Weight, Loose gear incl. Sling	50 kg

Capacity	
Personnel Capacity	4 persons
Transfer Weight Capacity	500 kg

Key Features



Closing Straps

Rope webbings are fitted with fast click-buckle straps ensuring fast and easy exit.



Nets

Four rope webbings made of spliced rope are attached to the upper and lower stainless steel structure. These rope webbings function primarily to secure personnel inside the basket.



Strap Tighteners

Strap tighteners are used for securing stretcher to the basket.



Bottom Deck

A heavy aluminum plate as bottom deck with anti-slip pattern.



Shock Absorbing Function

Large floats and bottom ring are fitted underneath the basket deck to provide shock-absorbing function for softer landing.

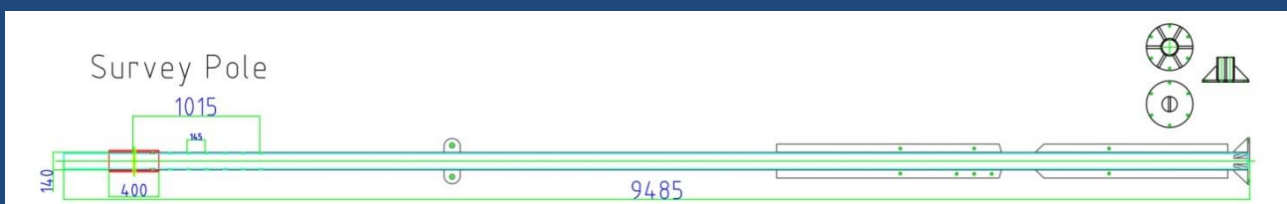
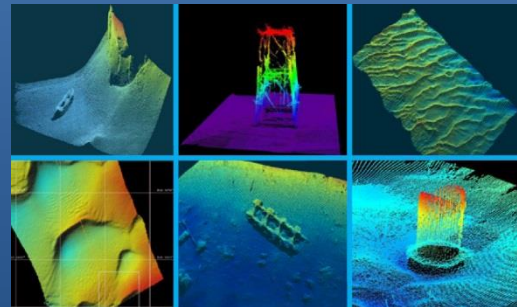
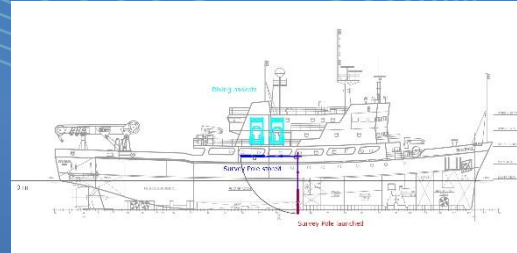
Specifications subject to change at owner's discretion

SPECIFICATION

Survey Pole Installation

Survey Pole Installation RS SENTINEL

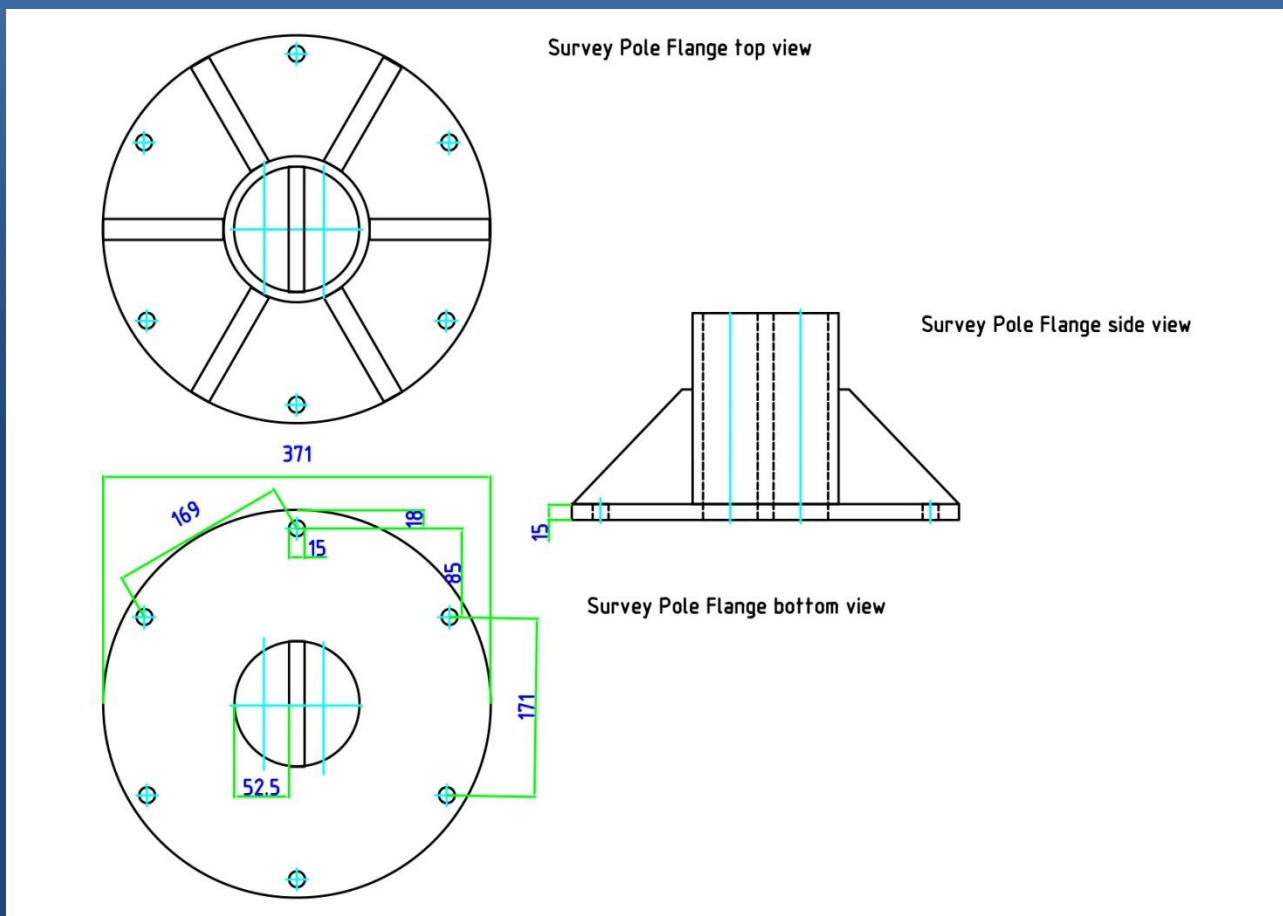
The DSV RS SENTINEL is equipped with a survey pole. It is installed on starboard side to attach a variety of survey equipment enabling different survey tasks.



Main Details	
Survey Pole	Installed midships on starboard
Vessel	DSV RS Sentinel, DP 2
Length	~ 9,5m
Draught	~ 5m (~0,5m under keel)
Flange	Flange for misc. attachments

Features
- Survey Pole with calibrated offsets
- Flange for misc. attachments of survey equipment (e.g. Multibeam, Scanning Sonar, Echoscope, Sub Bottom Profiler)
- Survey jobs such as seabed surveys, scour monitoring, construction support etc.
- Easy installation on surface, support from own divers to fix the pole on ships keel blade with a screwed on bracket

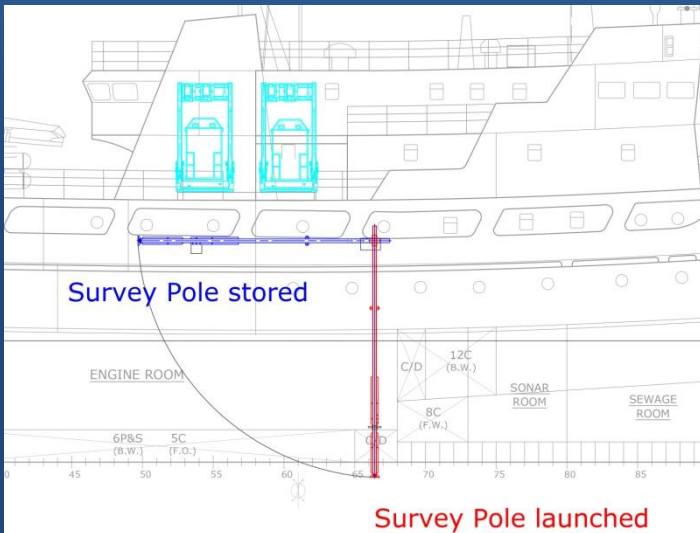
The installed and offset calibrated survey pole on the DSV RS Sentinel offers a wide variety of survey tasks from seabed surveys, scour monitoring to structure scans or construction support. Different sonar equipment can be attached to the pole's flange, such as multi beam systems, sub bottom profilers or other devices. The equipment can easily be installed on surface and kept aside or recovered for longer travels. When lowered under water, it can be fixed with a bracket on the ships keel blade, which can be processed by our own team.





The left image shows the bracket mounted on the DSV RS Sentinel's keel blade to prevent vibrations. The bracket can be installed by our diving team in port or on the open sea.

The below picture displays the topside view of the pole being recovered into the travel position.



In lowered position the flange of the pole is located around 0,5m under the keel of the vessel. Draught of the ship is approx. 4,6m.